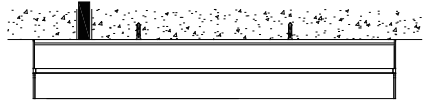


Batten - Mounting instructions

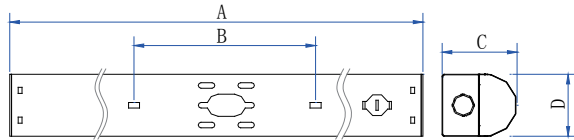


Wiring Method

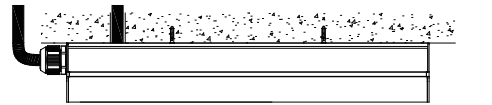
• Back wiring



Size:

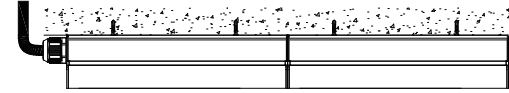


• Side wiring



A B 610			
A	B	C	D
600mm	350mm	68mm	56mm
1149mm	720mm	68mm	56mm
1450mm	720mm	68mm	56mm
1750mm	1100mm	68mm	56mm

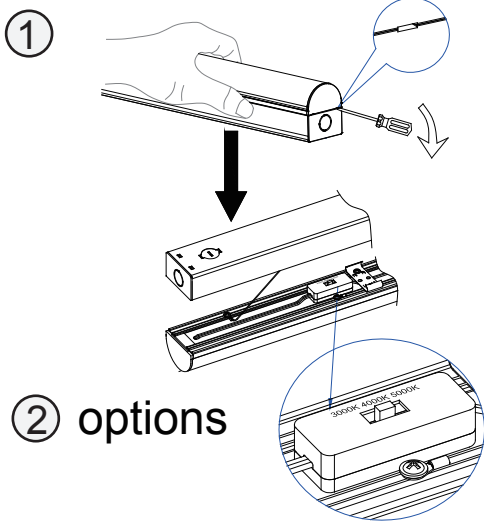
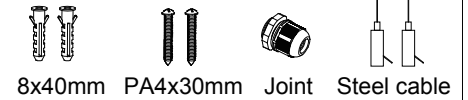
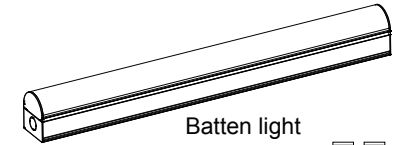
• Linkable (Double Wired)



How many LED fixtures we could connect on one line

Input Voltage	Max Qty
230VAC/50W	14
230VAC/40W	18
230VAC/35W	20
230VAC/30W	24
230VAC/25W	28
230VAC/20W	36
230VAC/15W	48
230VAC/10W	72

Parts included:



② options

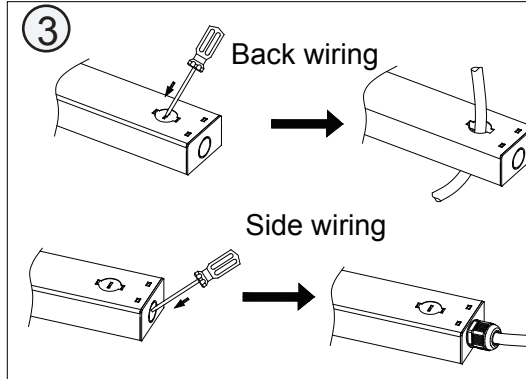
Before use, Color temperature setting:

Option 1:	4000K	5000K	6000K
Option 2:	3000K	4500K	6000K
Option 3:	3000K	4000K	5000K

• Wattage setting (Option)

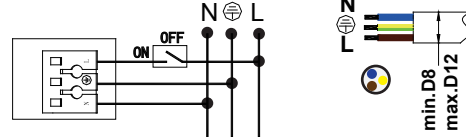
0.6M Batten		
1	2	Power(W)
-	-	11W
ON	-	14W
-	ON	17W
ON	ON	20W

1.2M Batten		
1	2	Power(W)
-	-	20W
ON	-	25W
-	ON	30W
ON	ON	35W

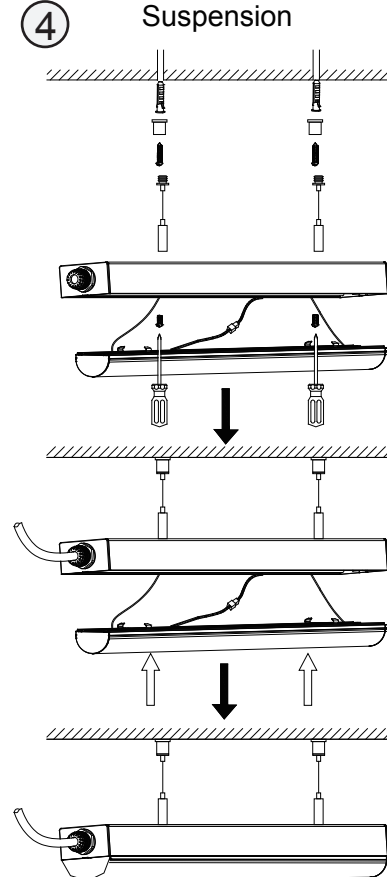
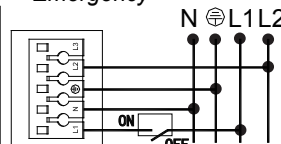


⑤

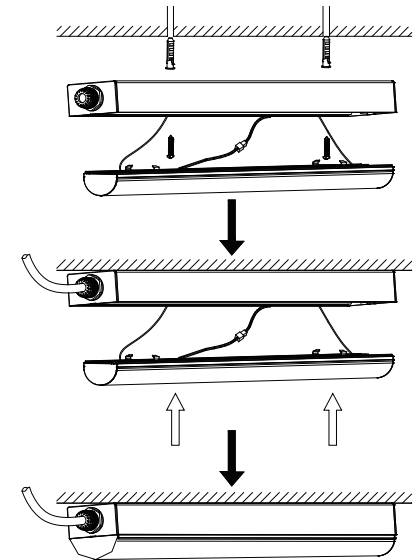
• Non-Dimmable



• Emergency



Ceiling Mounted



⚠ Safety notes:

The installation and connection of the luminaire must be done when switched off and by qualified people.

Make sure no voltage while installation .