

LIBRA

Cyanlite Surface Mounted LED Panel Light Sales Manual v1.0

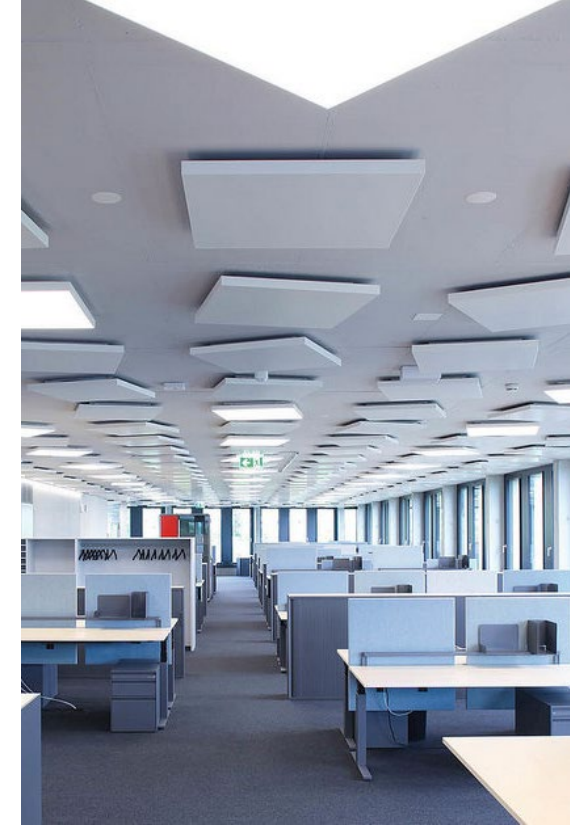


INTRODUCTION

The Cyanlite™ LED panel lights LIBRA series has been designed specifically for Surface Mounted installation on Plasterboard and Concrete ceilings. The Libra series surface mounted luminaires have a wide product portfolio includes square and rectangular shape, as well as direct/indirect lighting options, and multiple sizes to retrofit and replace the traditional T5/T8 troffer luminaires.

With Cyanlite patented mounting fixture, the installer no need to make the positioning when install, so the installation is simple and easy, also no need to dismantle and reassemble as traditional surface mounted luminaires, saving huge time for installers and enabling them to complete the project easily and quickly.





APPLICATIONS



MARKET POTENTIAL

SCHMITZ | WILA

CLEAR OFFICE

Deckenbauleuchte, Pendelleuchte, direkt/indirektstrahlend
Mikroprismen
Isolierteuchte
Leuchtgehäuse silber grau
LED 4000 K

Produkt 121-144-224

Leuchte

Wand- und Deckenleuchte CLEAR - diese umfangreiche Leuchtenfamilie mit unterschiedlichen Formen, Größen und Bestückungen fügt sich ganz selbstverständlich in verschiedene Umgebungen ein. Die formale Reduktion und dezente Materialität aus Aluminium und weißem Acryl machen aus CLEAR ein vollkommenes Gestaltungselement.

Lichtoptik

Mit Prismatik, für eine normgerechte Bildschirmarbeitsplatzbeleuchtung (UGR < 19)
Lichtverteilung direkt/indirekt für zusätzliche Akzentuierung an der Decke

Lichttechnik

Farbwiedergabe Ra 80
Energieeffiziente Low-Power-LEDs
Farbstabilität: <3-step MacAdams (SDCM)
Lebensdauer: 50.000h (L80/B10)

Leuchtgehäuse

Abgesetzter Leuchtenkörper
Gehäusefarbe: silber grau
Keine sichtbare Verschraubung
Inklusive Deckenbefestigung
Isolierteuchte

Betriebs- und Montagetechnik

LED-Betriebsgerät in Leuchtgehäuse integriert
Mit dem Pendelstutz lässt sich die Standard Leuchte in eine Pendelleuchte umfunktionieren
Pendelstutz separat zu bestellen (siehe Optionales Zubehör)

Lichttechnik

Bestückung	37 W
Farbwiedergabe Ra	80
Farbtemperatur	4000 K
Leuchtmittelstrom	4600 l/m
Systemeffizienz	115 l/m/W
Energieeffizienzklasse	A+
Leuchtdichte $\gamma \geq 65^\circ$	<3000 cd/m ²
UGR	18
Leuchtenanzahl LZ (siehe Glossar)	0,03

Betriebstechnik

Betriebsart DALI

Abmessungen

Länge L	1120 mm
Breite B	210 mm
Höhe H	90 mm
Gesamtgewicht	7,5 kg



Waldmann **W**

ENGINEERS OF LIGHT

OFFICE / Products / Recessed and Surface-Mounted Luminaires / IDOO.fit

INDUSTRY

OFFICE

HEALTH & CARE

Products

Applications

Service

References

Smart Lighting

» Back

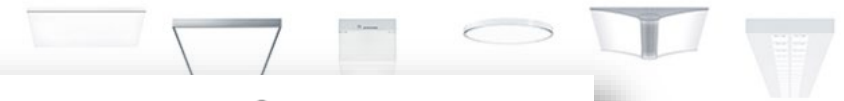
IDOO.fit - IFE 5000/830/D - 43 W / 5300 lm



ZUMTOBEL

COMPANY NEWS PRODUCTS LIGHTING SOLUTIONS KNOWLEDGE SERVICE CONTACT

SURFACE-MOUNT LUMINAIRES



SEARCH PRODUCTS SERVICE PROJECTS

REGIOLUX

Product details

Lighting tech

Order No. 113867000-007

Fitted with LED

Energy efficiency A/A+/A++

Technology DALI, switchable



Surface-mounted luminaires

SURFACE-MOUNTED LUMINAIRES

Independent and robust

Surface-mounted luminaires are exposed. To leave a powerful impression, design and functional architectural circumstances. We achieve this with flexible and individual adaptations to the lighting positioning. Both as a continuous row and individual solution – there are many possible combinations and installation types.



RZB

PRODUCTS APPLICATIONS DESIGN MEDIA CENTRE SERVICE CONTACT COMPANY NEWSLETTER

Modular surface mounted luminaires



PRODUCTS

APPLICATIONS

SERVICE

COMPANY

TRIUX
SIMPLY YOUR LIGHT



SURFACE-MOUNTED LUMINAIRES



M D CDP

DP LED ceiling
mounted luminaire

YELLOW LIGHT MIREL evolution
vo/inf



USP – UNIQUE SELLING POINT

• Advantages

- Specifically designed for surface mounted installation, screwless appearance
- Wide product range for replacing traditional T5/T8 troffer surface mounted luminaires
- Easy and fast installation, patented installation design, no need calculate positioning when install
- Flexible and customization oriented, bespoke sizes are welcome
- No distance between luminaire and ceiling for downlight version, 35mm for up/down light version

• Features

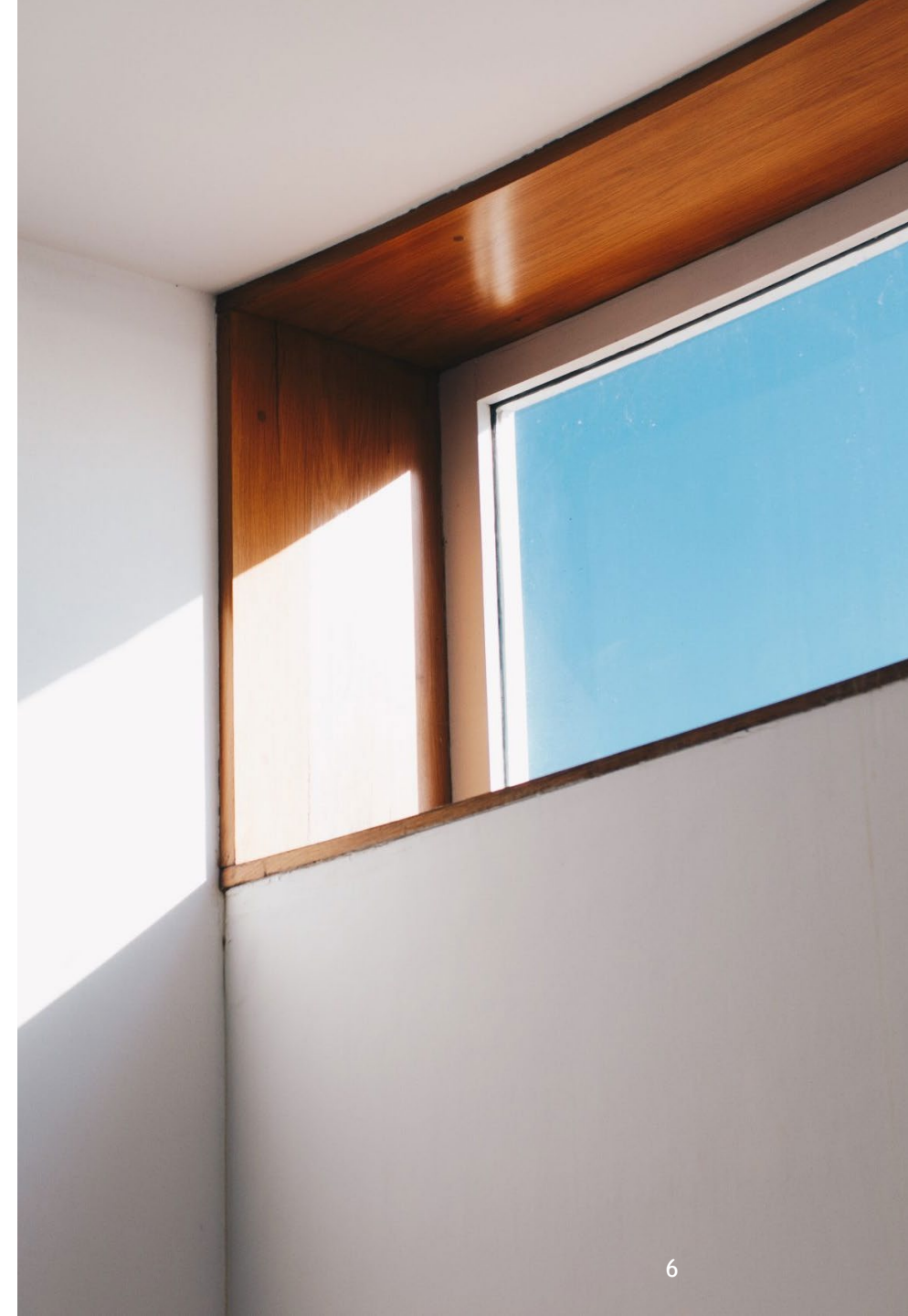
- | Standard sizes (mm): 450x450, 600x600, 625x625, 700x700; 300x1200, 300x1500; 184x1231, 184x1531; 284x1231, 284x1531; 310x1247, 310x1547
- | RAL9016 as standard, other RAL colors available on request
- | System Efficiency upto 120 lm/W
- | EN 12464-1& LG7 Compliant, UGR<19 Optional when fitted with Micro Prismatic diffuser
- | Range of color temperatures 3000K, 3500K, 4000K, 5000K & 6000K
- | 5 Years Warranty
- | Various dimming options, including 0-10V, DALI, Switch Dim etc.
- | Emergency options available



PRODUCT DESIGN PHILOSOPHY

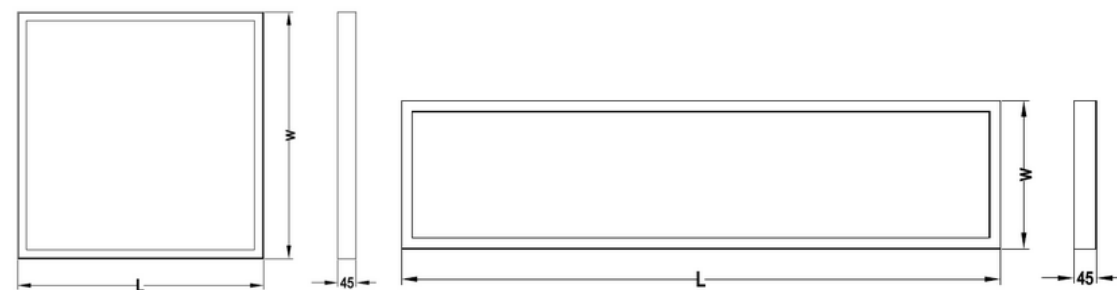
In Cyanlite, the products are designed and produced under 2 basic philosophies.

1. **High Quality** – We don't produce inferior products, because usually, the replacement is very costly and troublesome. We prefer to be cautious in the first place than say sorry afterwards. And when you pay for cheap, you pay twice.
2. **Easy Installation** – We understand that sometimes the installation cost is even higher than the product itself. Customer can save huge money if the luminaires can be installed perfectly and quickly.



SPECIFICATION

Model	Part No.	Power	Luminous Flux	Dimension (mm)
450x450	SM25W045	25W	3000 lm	450x450x45
600x600	SM30W060	30W	3600 lm	600x600x45
625x625	SM30W062	30W	3600 lm	625x625x45
700x700	SM40W070	40W	4800 lm	700x700x45
300x1200	SM34W312	34W	4000 lm	300x1200x45
300x1500	SM42W315	42W	5000 lm	300x1500x45
184x1231	SM22W112	22W	2500 lm	184x1231x45
184x1531	SM42W115	42W	5000 lm	184x1531x45
284x1231	SM34W212	34W	4000 lm	284x1231x45
284x1531	SM42W215	42W	5000 lm	284x1531x45
310x1247	SM34W313	34W	4000 lm	310x1247x45
310x1547	SM42W316	42W	5000 lm	310x1547x45



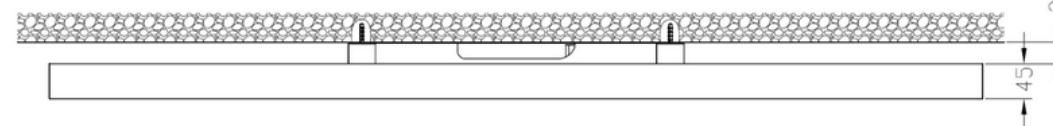
L	W
450	450
600	600
625	625
700	700

L	W
1200	300
1500	300
1231	184
1531	184
1231	284
1531	284
1247	310
1547	310

- Direct light version

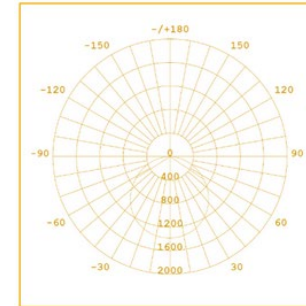


- Direct/indirect light version

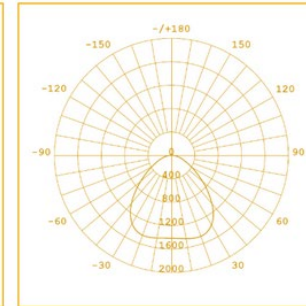


TECHNICAL DATA

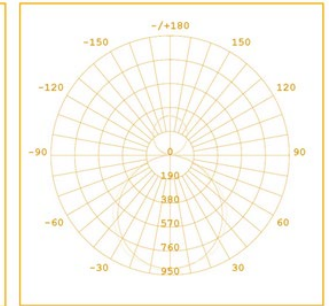
System Efficiency	120lm/w @ 4000K
CRI (Ra)	>80
Color Temp.	3000K/3500K/4000K/5000K/6000K
Lighting Method	Side-lite
Light Source	SMD4014
SDCM	<3
Beam Angel	110° Opalic Diffuser/ 90° Micro Prismatic Diffuser/ Up and Down(10% Up / 90% Down)
Service Life	L80B10 = 50.000h
IP Rating	IP20
Impact Resistance	IK04
Hot Wire Resistance	650° C
Driver	Flicker Free On/off driver as standard
Dimmable	1-10V, DALI, Push Dim, Bluetooth Optional
Power Factor	>0.9
Input Voltage	200~240V
Flick Free	Yes
Housing Color	RAL9016 White
Housing Material	Aluminum frame, steel housing
LGD Material	Acrylic (PMMA)
Diffuser Material	Polystyrene (PS)
Storage Temp.	-40°C~+80°C
Working Temp.	-20°C~+45°C
Mount	Surface Mounted/Suspension/Recessed
Warranty	5 years



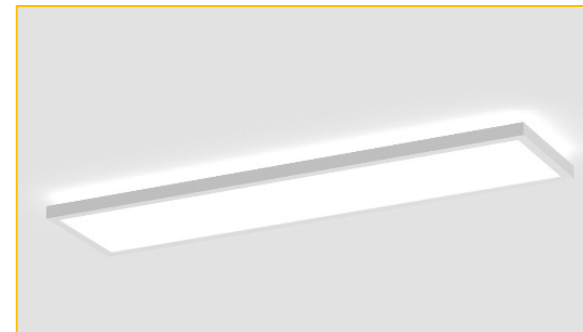
- UGR22 with Opalic Diffuser



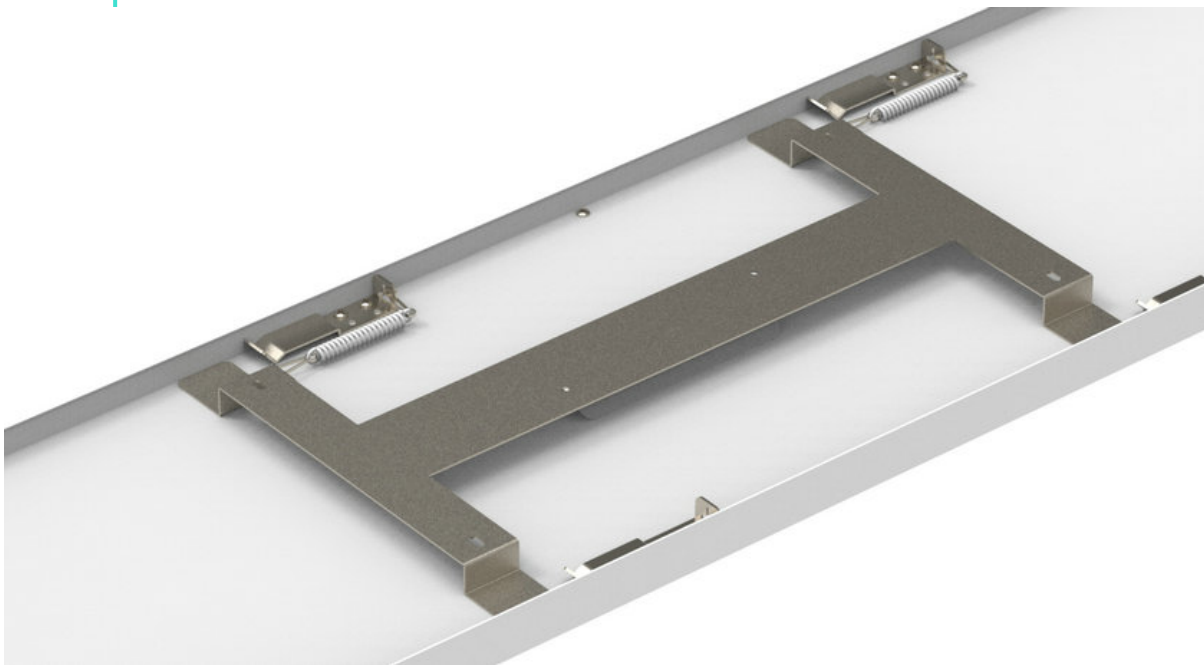
- UGR19 with Micro Prismatic Diffuser



- Up and Down version



INSTALLATION

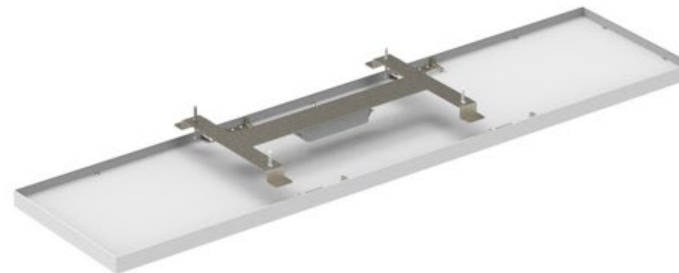


1, Patented installation design, only 4 steps to finish the installation, super fast and stable.

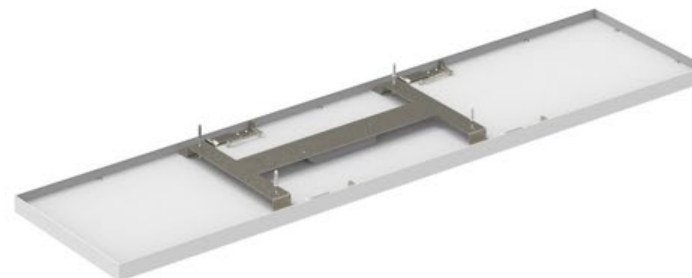
2, No distance between luminaire and ceiling (for downlight version, 35mm for up/down light version)

3, No need to calculate positioning when installing.

1, screw the mounting fixture to the ceiling and connect the safety rope hook and wiring to LED driver



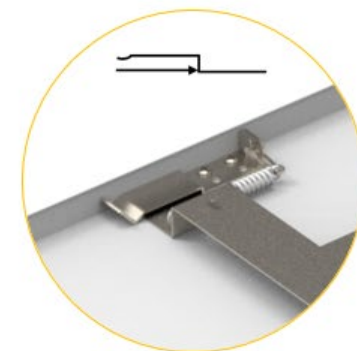
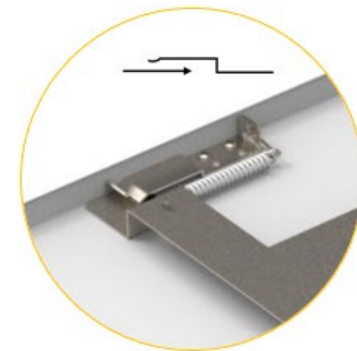
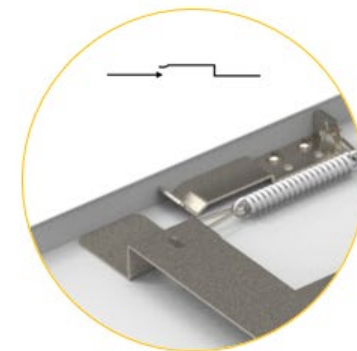
2, push and slide the luminaire towards the mounting fixture



3, sliding the luminaire

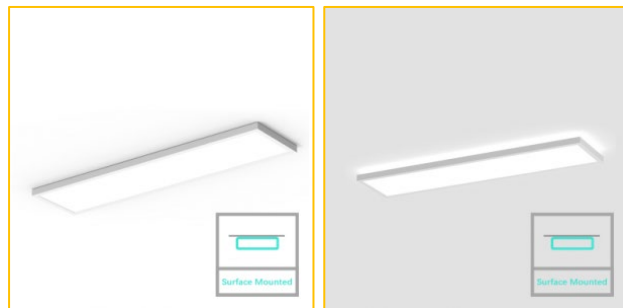


4, slide to the end of clip, and job done.

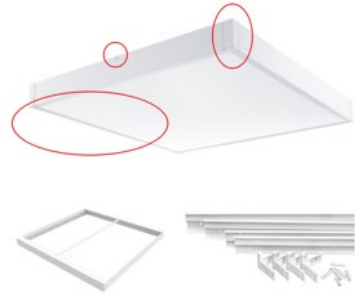


WHOM AND WHERE TO SELL

Ceilings	Applications	Target customers
Wood ceiling	Office	Wholesaler
Gypsum board ceiling	Meeting room	Distributor
Concrete ceiling	Corridors	Reseller
	Education	Contractor
	Hospital	Installer
	Administrative building	Refurbishment projects with traditional troffer/louver luminaire

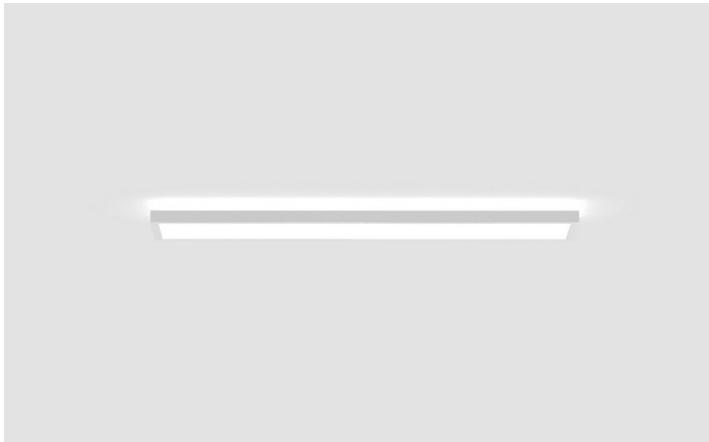
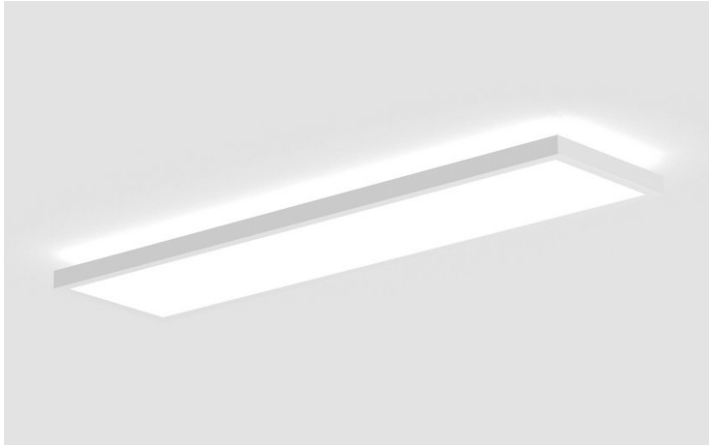


DIFFERENCES WITH COMPETITORS



Supplier	Supplier A	Supplier B	Cyanlite
Structure	separated mounting frame + recessed panel light	assembled mounting frame + recessed LED panel light	specially designed surface mounted structure
Installation	1,assemble the frame firstly 2,fix the frame to the ceiling 3,slide panel light inside 4,close the frame	1, fix the mounting bracket to the ceiling 2, put the panel light inside frame 3, screw the frame to the bracket	1, fix the mounting bracket to the ceiling 2, slide the panel to the bracket
Installation time	Very long	Long	Fast
Appearance	visible screws visible assembled gaps visible double frames of panel light and mounting frame	visible screws Low class	no visible screws or gaps at all High class and elegant
Light distribution	down light	down light	down light up and down light
Size	only standard 300, 600, 625, 1200 sizes	only standard 300, 600, 625, 1200 sizes	besides all standard sizes, also has 184, 284,1231, 1531, 1247, 1547 as traditional troffer louver luminaires; more than 12 sizes and customized sizes accepted

FAQ – FREQUENTLY ASKED QUESTIONS



- Q1 Is it easy to install?
A1 Yes, very easy to install, no need to assemble anything and no need to calculate positioning
- Q2 Is the structure stable?
A2 Yes, we use reinforced mounting bracket which is stable and robust
- Q3 What if I want customized sizes and spec?
A3 Customization is welcome and we can make it in different size, different coating, and different electrical parameters
- Q4 Is it easy to replace or remove this luminaire?
A4 Yes, uninstall is also very easy as installation, slide the luminaire off the clip and unlock the safety rope
- Q5 Will it drop from the ceiling?
A5 No, absolutely no. Our luminaire has 2 safety ropes design which can hold upto 50KG weight.



SALES BONUS & REBATE

Annual order qty	Rebated rate	Rebated qty
------------------	--------------	-------------

>1,000 pcs	3%	30~90 pcs
------------	----	-----------

>3,000 pcs	4%	120~200 pcs
------------	----	-------------

>5,000 pcs	5%	250~ pcs
------------	----	----------

*2020.1.1-2021.12.31

When the annual sales qty reach a certain amount, we will rebate corresponding quantity according to the rebate rate.





Other Surface Mounted luminaire from Cyanlite



Thank you!

Questions are welcome!



Call us: +86 189 6463 6209
Email us: sales@cyanlite.com
Know us: www.cyanlite.com